

PART OF THE SE. 1/4, OF SECTION 6, T.6N., R.1W., S.L.B. & M.
HERITAGE OAK SUBDIVISION AMENDMENT

435

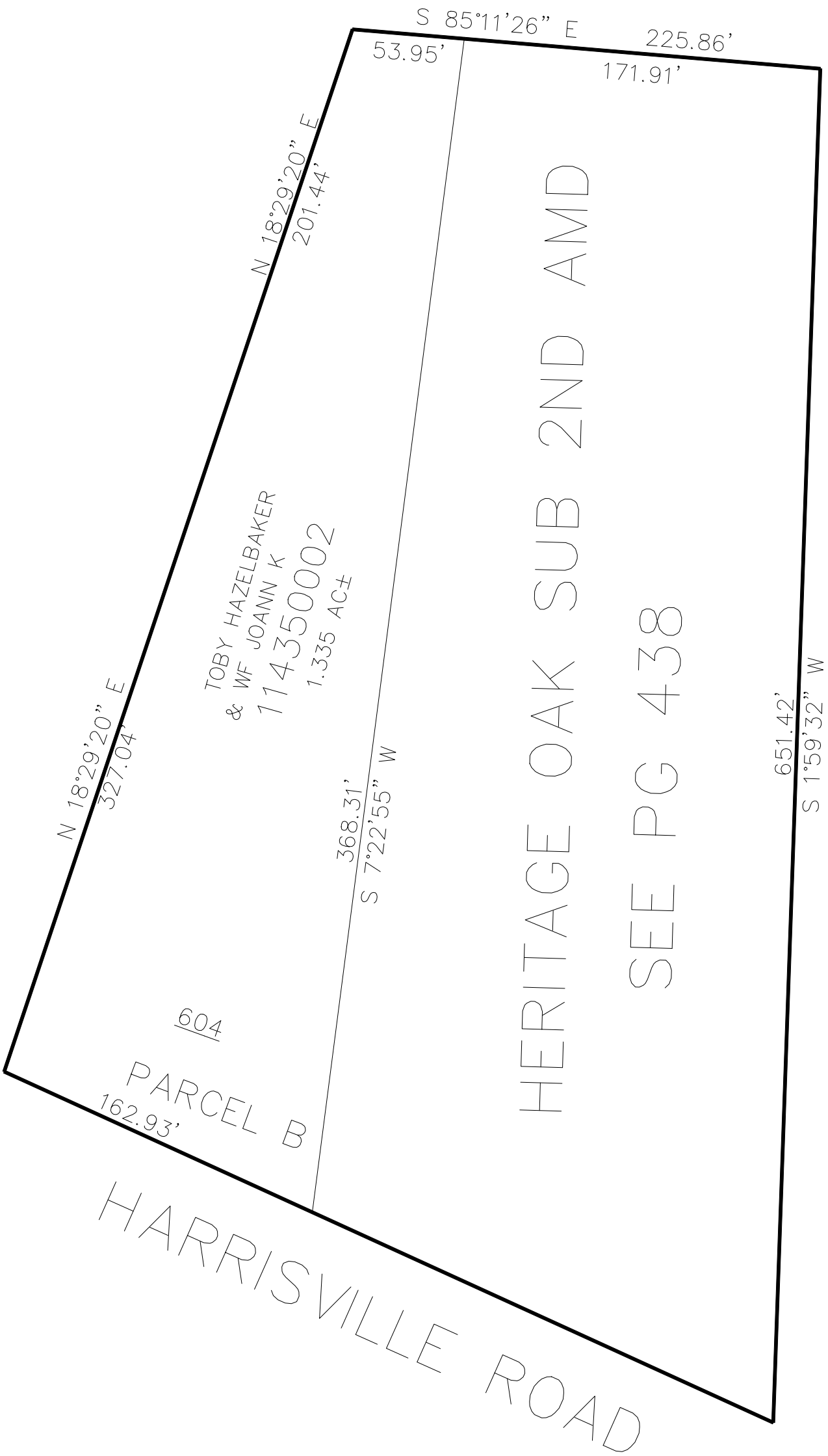
TAXING UNIT: 20

IN HARRISVILLE CITY
SCALE 1" = 60'

SEE PAGE 21

SEE PAGE 21

SEE PAGE 21



10' UTILITY & DRAINAGE EASEMENTS EACH
SIDE OF PROPERTY LINES AS INDICATED
BY DASHED LINES EXCEPT AS OTHERWISE
SHOWN.

FOR COMPLETE ENG DATA SEE
ORIGINAL DEDICATION PLAT IN
BOOK 87, PAGE 50 OF RECORDS.

FOR TAX PURPOSES ONLY